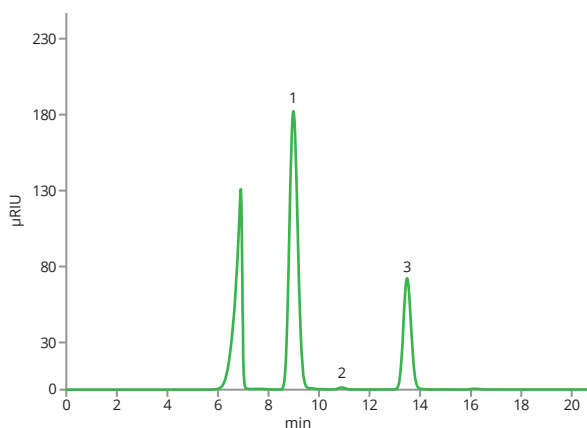
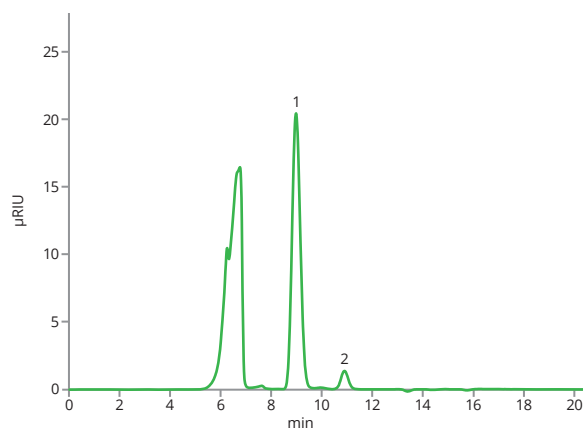


## Sugars in infusion solutions

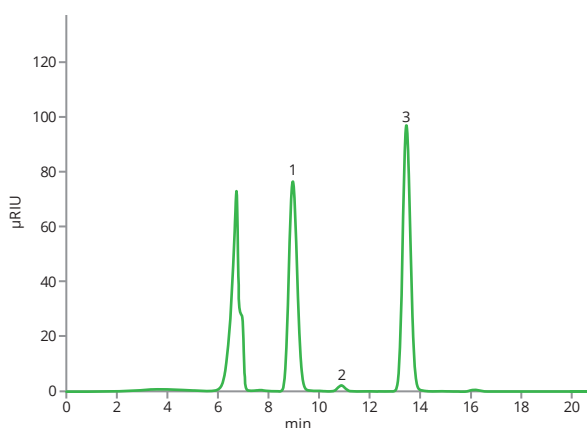
Sugars solutions in the form of infusions can be used to treat low blood sugar and water loss and as part of parenteral nutrition to optimise fluid, energy and nitrogen balance. As active ingredients of finished dosage forms, sugars should be controlled according to the strict requirements of pharmaceutical guidelines. In this application there are the results of the control of several solutions containing glucose, fructose and mannitol using Astra® Sugar Ca(S) column.



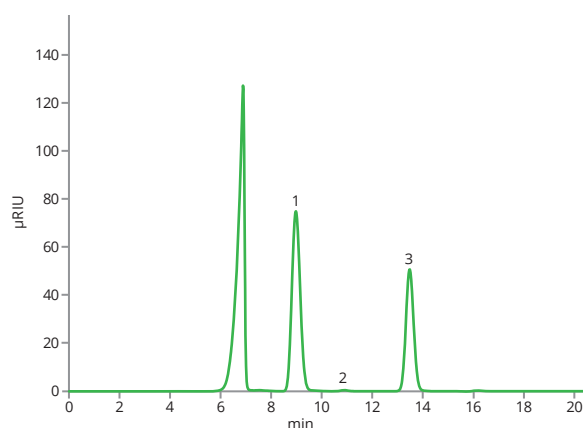
*Test solution 1 on ASTRA® Sugar Ca(S) column*



*Test solution 2 on ASTRA® Sugar Ca(S) column*



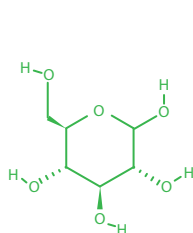
*Test solution 3 on ASTRA® Sugar Ca(S) column*



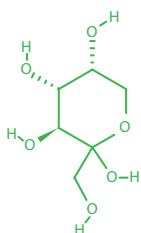
*Test solution 4 on ASTRA® Sugar Ca(S) column*

## Sugars in infusion solutions

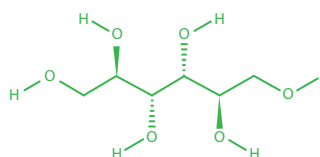
<b>Column</b>	ASTRA® Sugar Ca(S), 10 µm
<b>Dimensions</b>	300 mm × 8.0 mm
<b>Part number</b>	AST-5906-VN80
<b>Mobile phase</b>	100% H <sub>2</sub> O
<b>Flow rate</b>	0.8 mL/min
<b>Temperature</b>	80 °C
<b>Detection</b>	RID @55 °C
<b>Injection volume</b>	20 µL
<b>Analytes</b>	<b>1. Glucose</b> , CAS number 50-99-7 <b>2. Fructose</b> , CAS number 57-48-7 <b>3. Mannitol</b> , CAS number 87-78-5



Glucose



Fructose



Mannitol