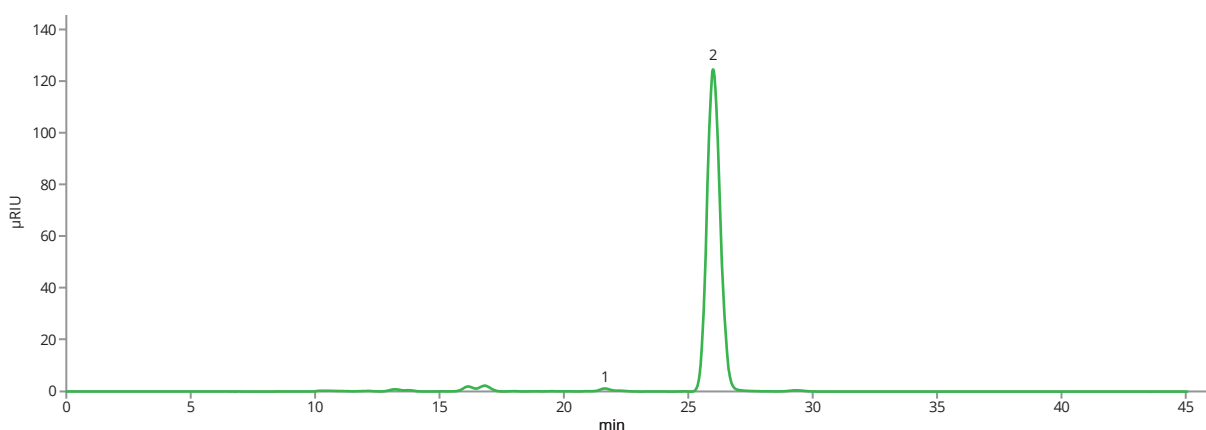
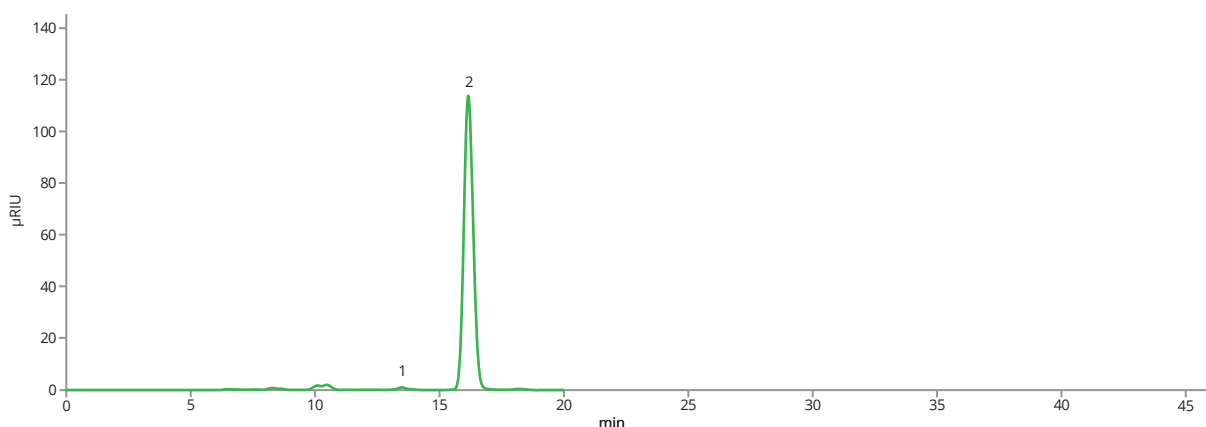


Sorbitol analysis according to Ph. Eur.

Sorbitol is a sugar alcohol commonly used as a sweetener and stabilizer in a wide range of pharmaceutical formulations. This application shows a method of control of sorbitol according to **Ph. Eur. Monograph 07/2019:0436**. Astra® Sugar Ca(S) column provides a perfect resolution factor and peak symmetry under the conditions of the pharmacopoeial method.

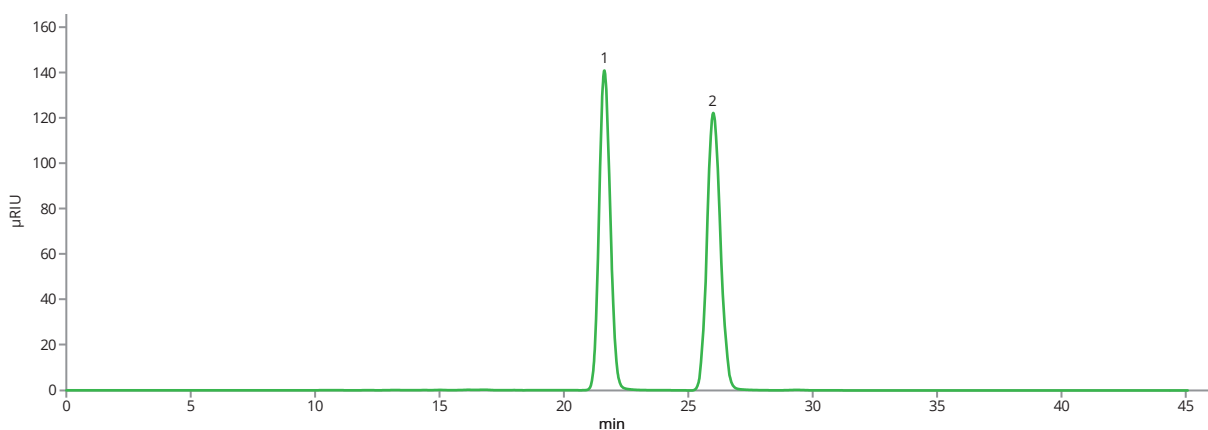


Test solution on ASTRA® Sugar Ca(S) column (0.5 mL/min)

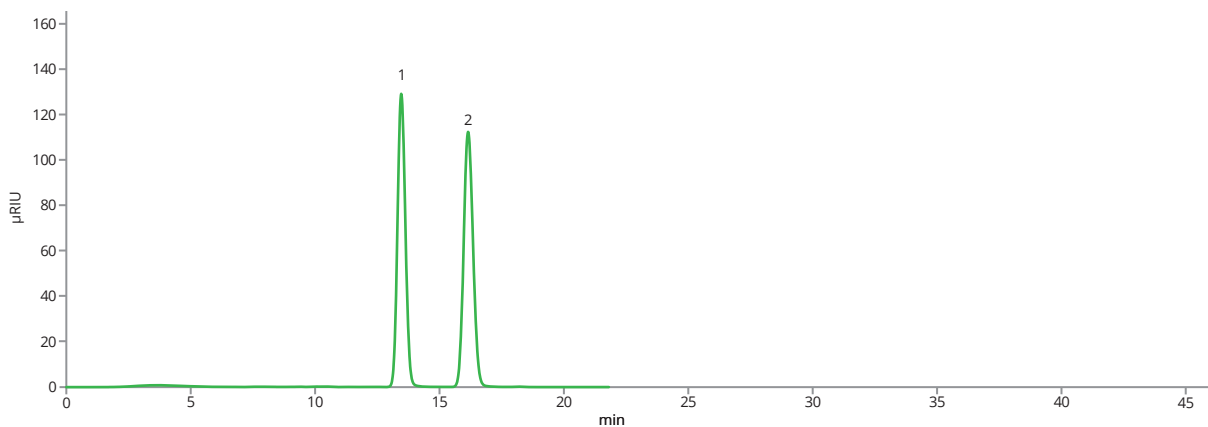


Test solution on ASTRA® Sugar Ca(S) column (0.75 mL/min)

Sorbitol analysis according to Ph. Eur.



Reference solution (b) on ASTRA® Sugar Ca(S) column (0.5 mL/min)

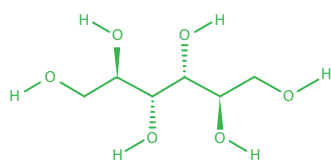


Reference solution (b) on ASTRA® Sugar Ca(S) column (0.75 mL/min)

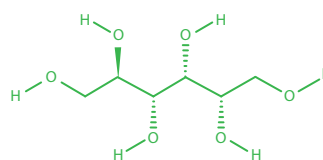


Sorbitol analysis according to Ph. Eur.

Column	ASTRA® Sugar Ca(S), 9 µm
Dimensions	300 mm × 8.0 mm
Part number	AST-5906-WN80
Mobile phase	100% H ₂ O
Flow rate	0.5 mL/min and 0.75 mL/min
Temperature	80 °C
Detection	RID @55 °C
Injection volume	20 µL
Analytes	1. Mannitol , CAS number 87-78-5 2. Sorbitol , CAS number 50-70-4



Mannitol



Sorbitol